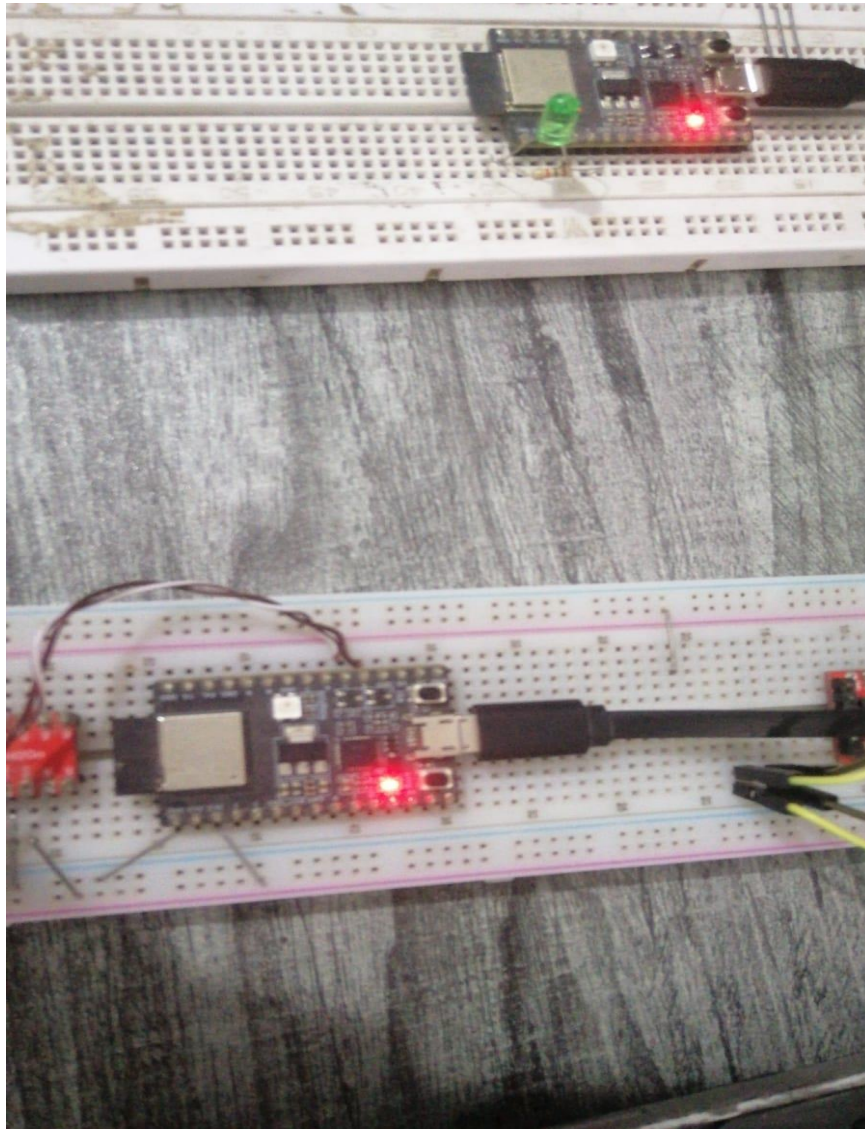
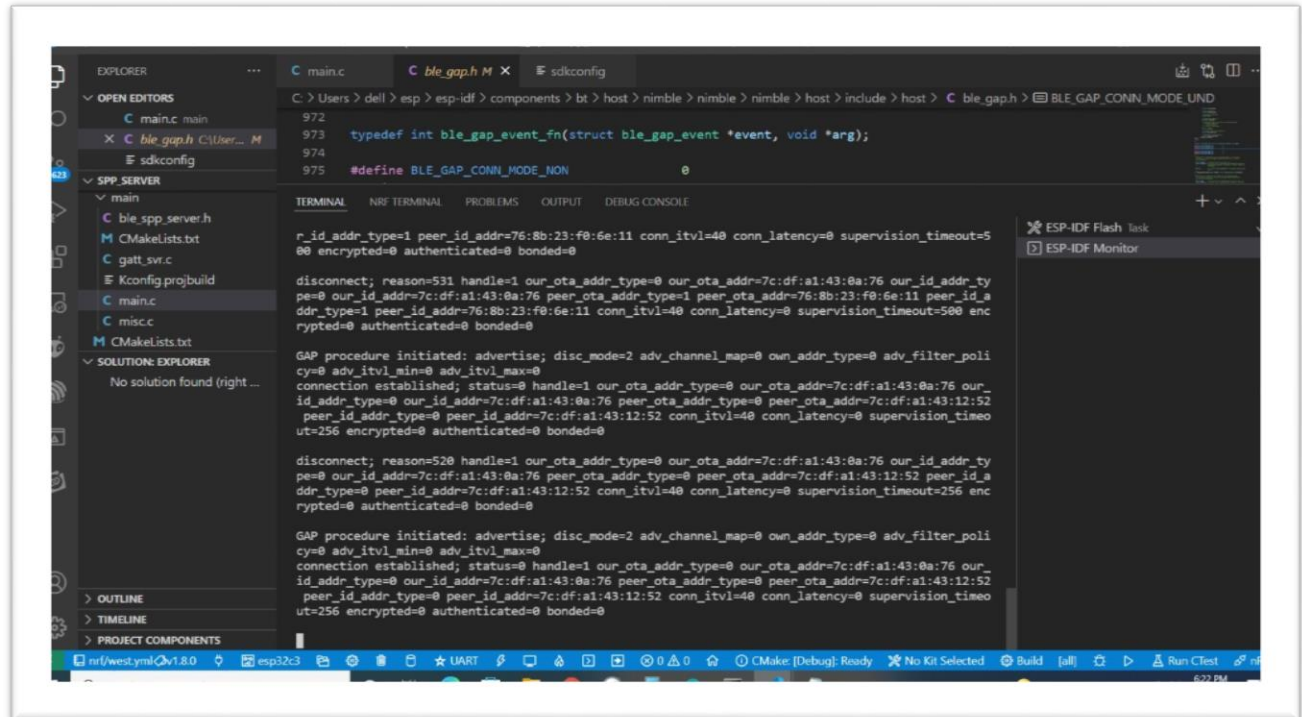


I am using esp-idf (vscode studio) **NIMBLE** , **SPP_Client** and **SPP_Server** application . It works perfectly for only 1 device and if increase the number of client device then still connects only 1 device. I am using **three esp32c3** for this testing and **one nrf connect android app** as well.

I have pasted the screen shots to show my testing and issue i am facing. Below image is the two esp32c3 , one is SPP_server and second os SPP_Client.

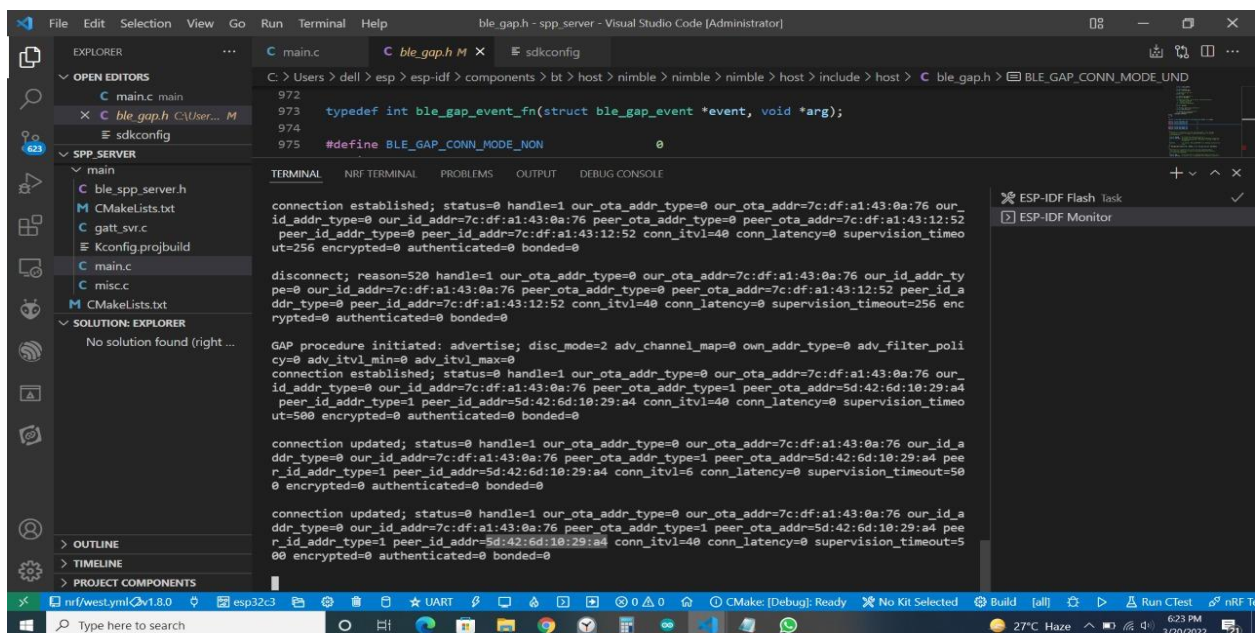


This is the image when only one device connected!



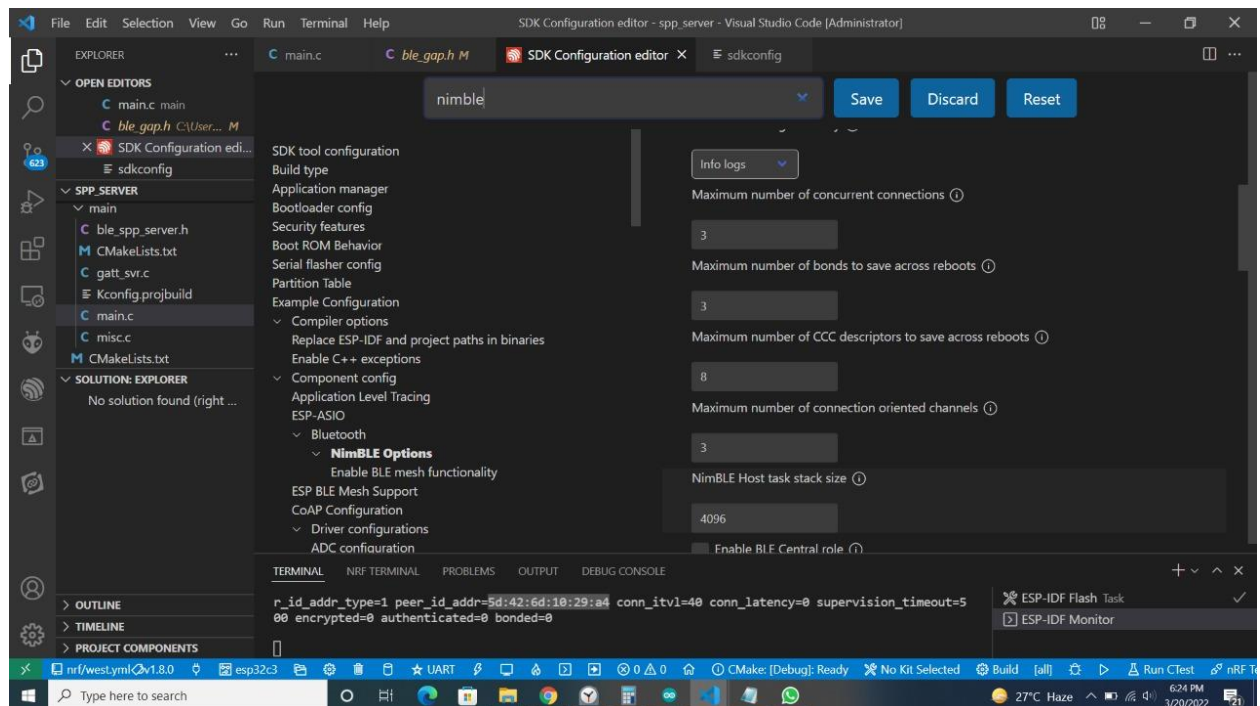
You can see the peer addr is 7c: df: a1:43:0a:76. Although I am able to connect second device as well but after **disconnecting the first one**.

Below image showing the second device connected when I disconnected the first one as mentioned above. Device address is also highlighted in the below image.

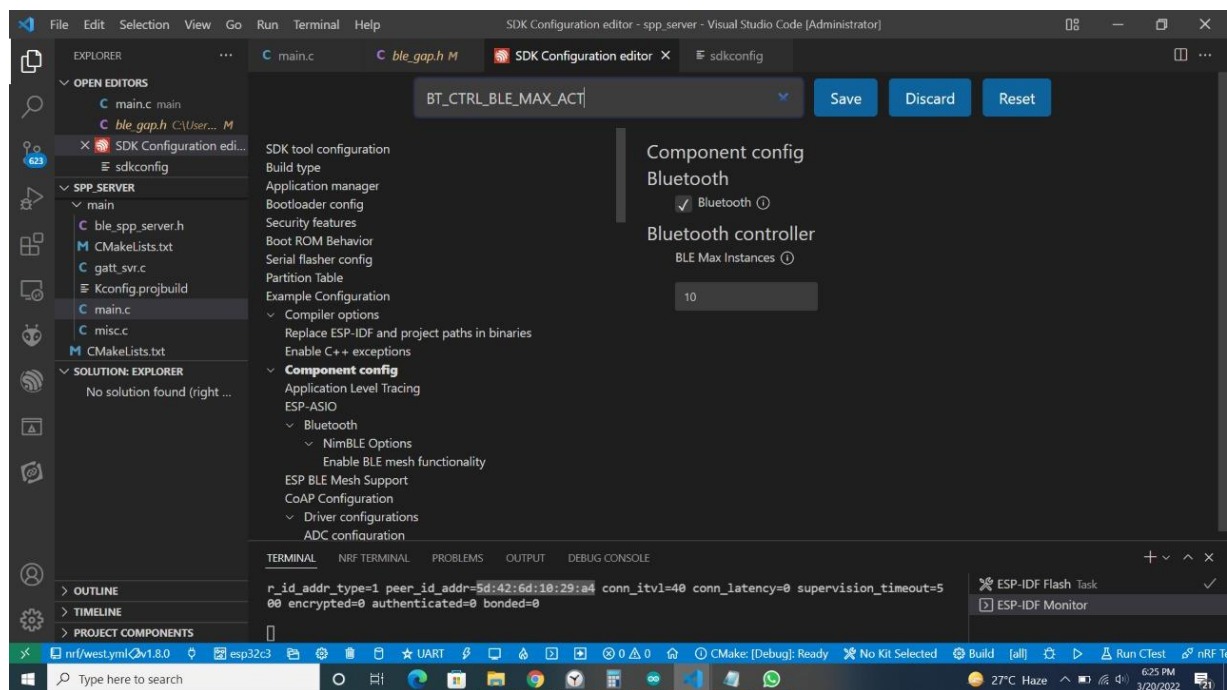


You can see the peer addr is **5d:42:6d:10:29:a4**

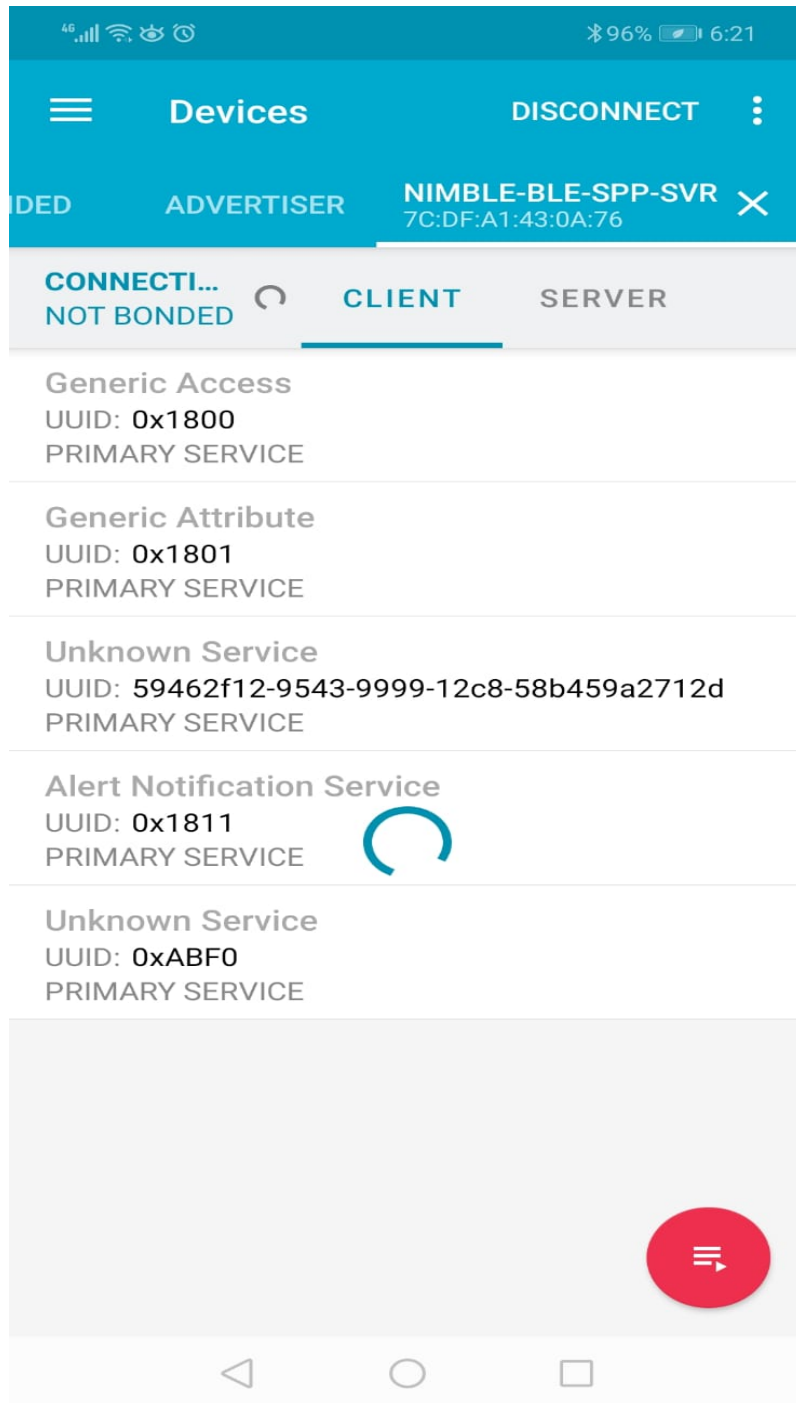
In this image you can see the menuconfig setting as per mentioned by the documents.



This Last image is the BT_CTRL_BLE_MAX_ACT setting for esp32c3 which is 10.



Here is the image of nrf connect App. You can see that it goes to **connecting/busy** state when one device already connected to the spp_server.



After the setting I saved compiled and load the program but same results. I also tried **Arduino_NimBLE** library with **arduino** it works perfect and I am able to connect **4 devices** without any issue. But in this esp-idf Firmware stack I am unable to connect more than 1 device. Can you please help me in this regard?