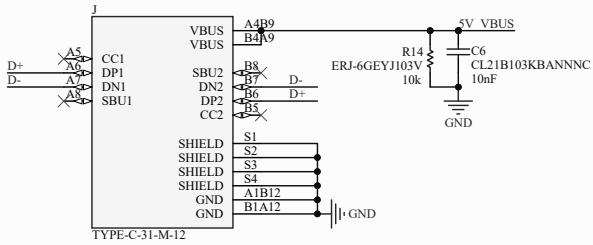
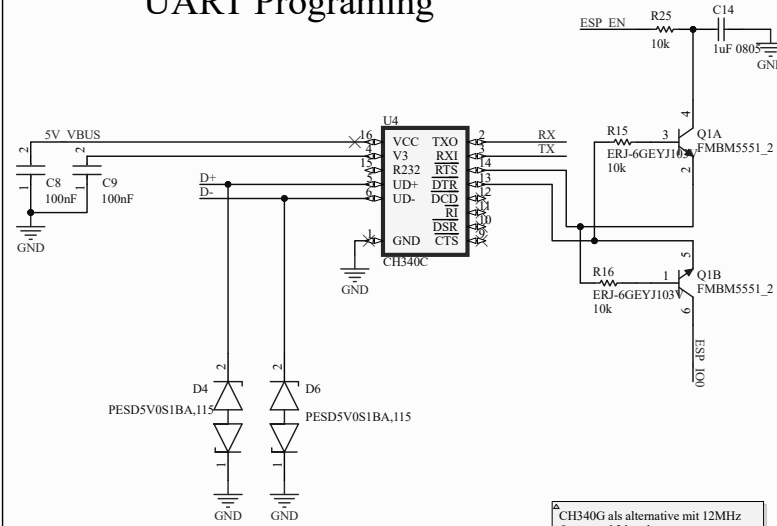


## USB C

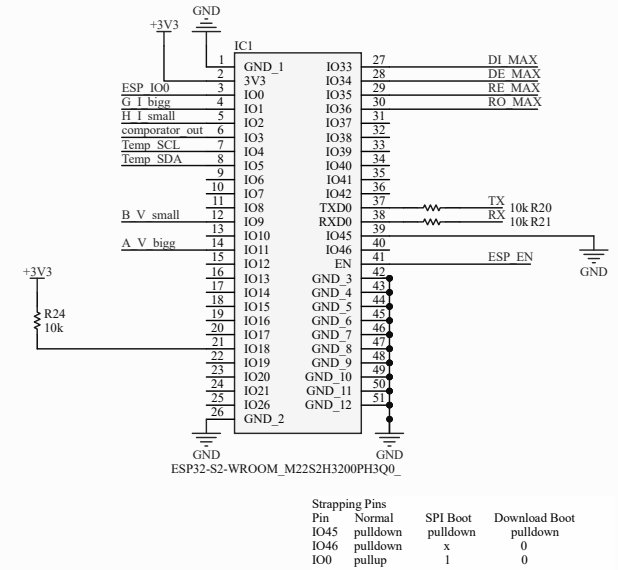


## UART Programming

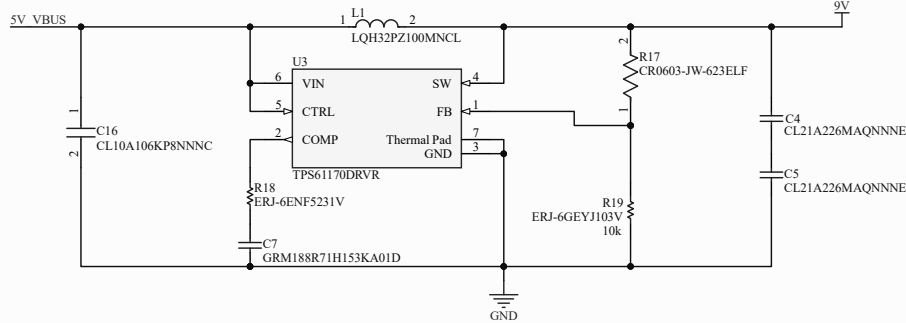


CH340G als alternative mit 12MHz Quarz und 2 kondensatoren  
CH340B ohne Quarz als alternative.

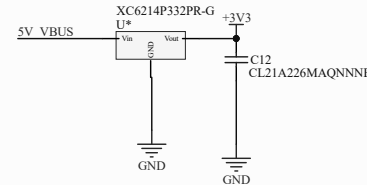
## ESP32 (BT and WLAN)



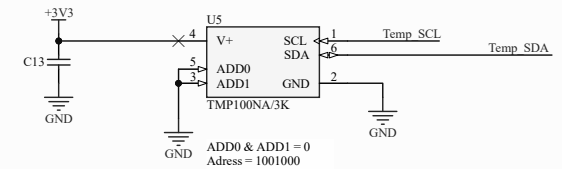
## 9V Power



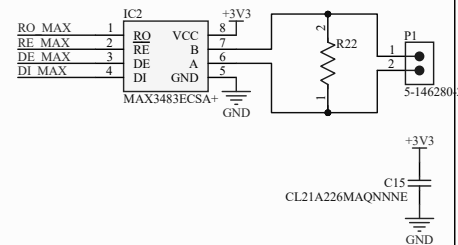
## 3V3 Power



## Temperatur Sensor



Interne Pullup einschalten.  
I2C Schnittstelle definieren!



Title		
Holzfeuchtigkeit klein		
Size	Number	Revision
A3		
Date:	12.08.2021	Sheet of
File:	C:\Users\...Feuchtigkeit small Microcont...Benjamin Brandt	