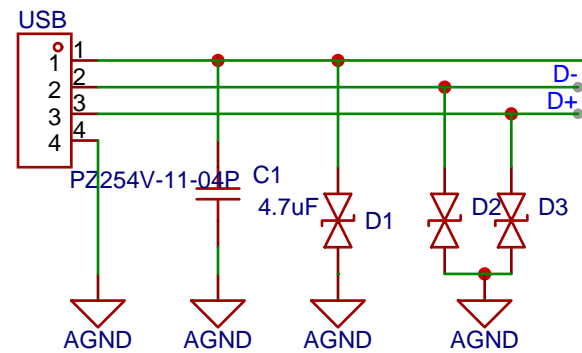
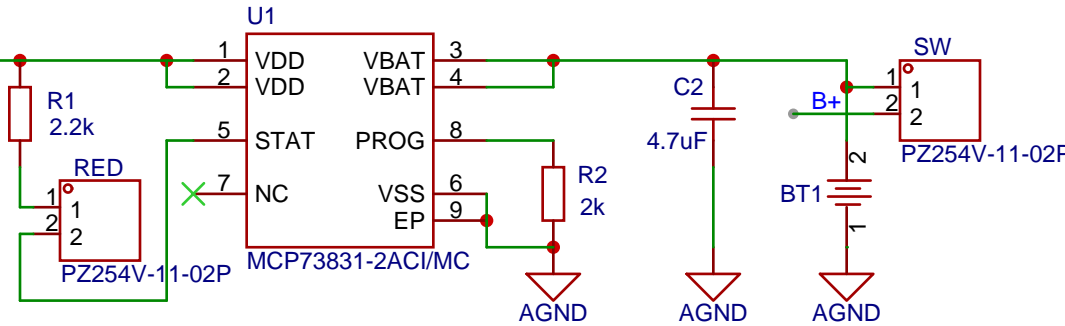


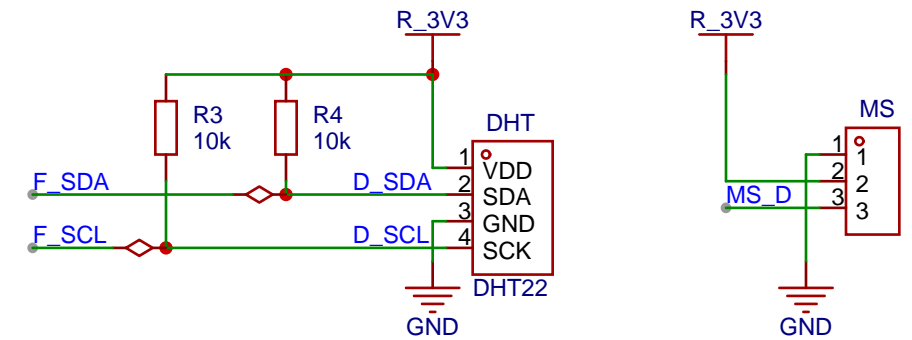
USB Circuitary



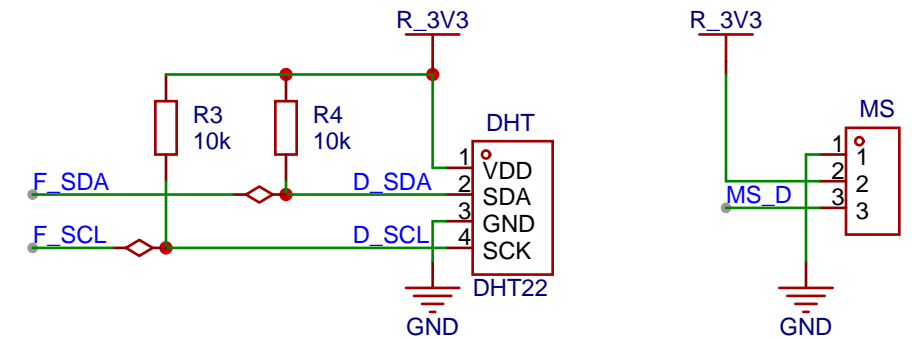
1S Charger



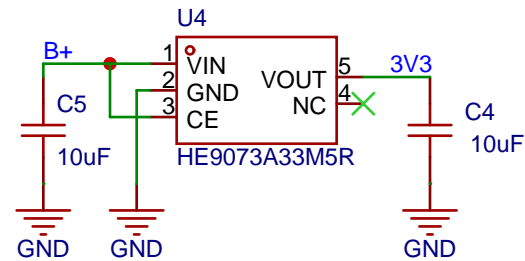
PWR BTN & BAT CON



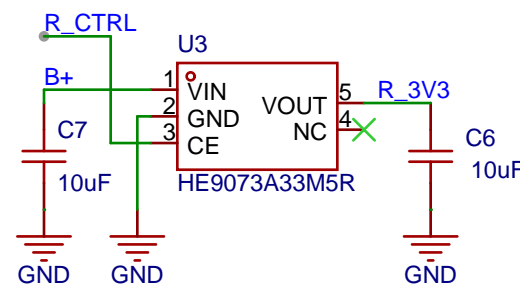
DHT & Moist Senor



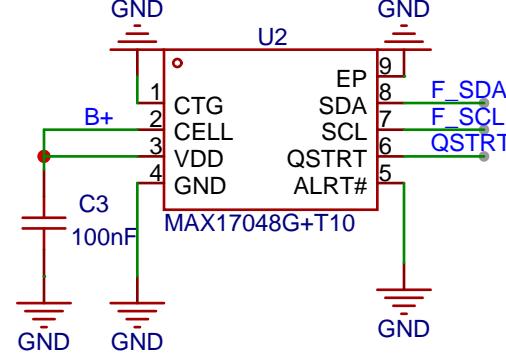
LDO for ESP32



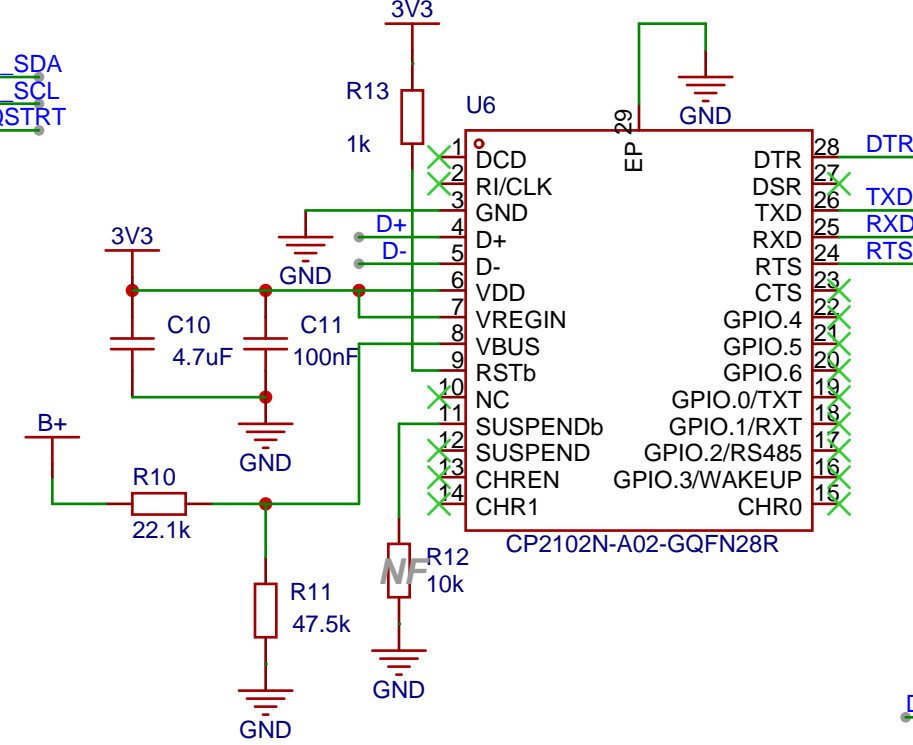
Controlled LDO



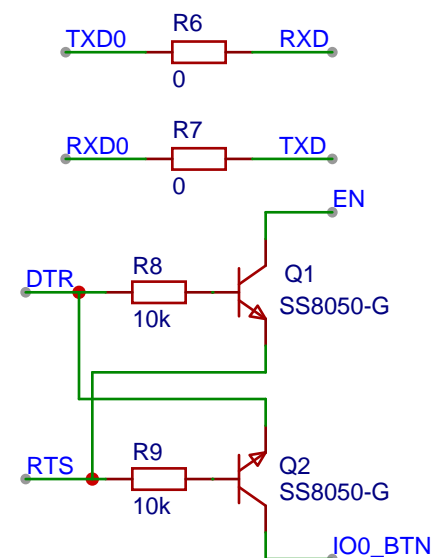
1s Fuel Guage



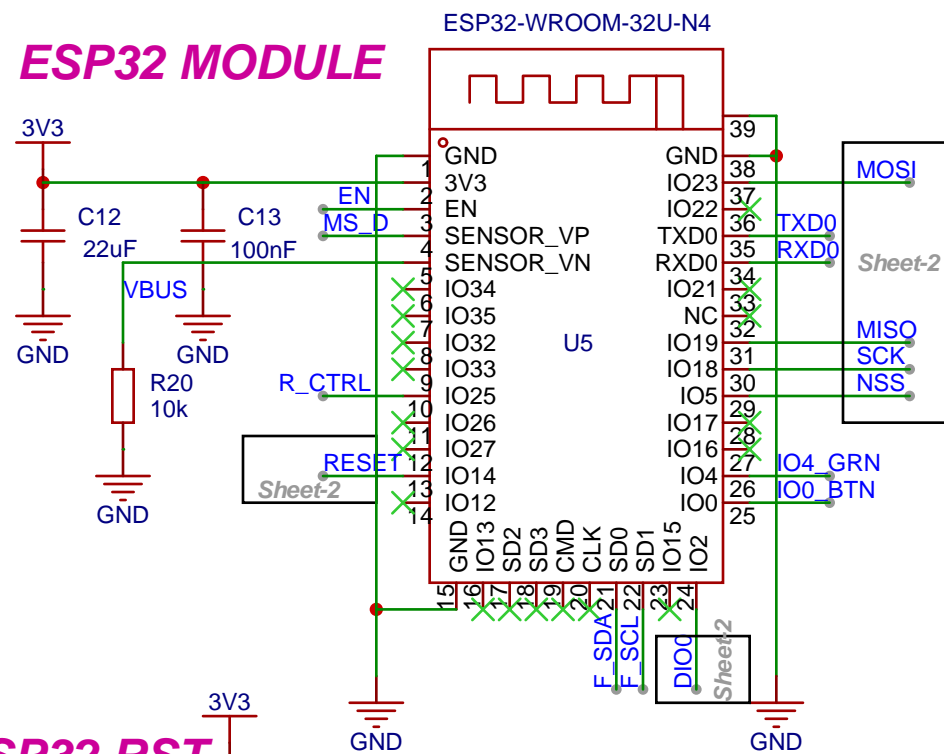
USB to Serial



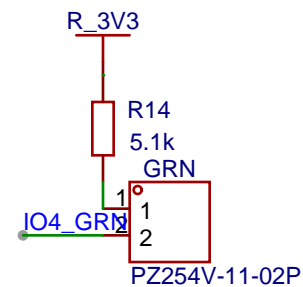
Serial Sig Ctrl



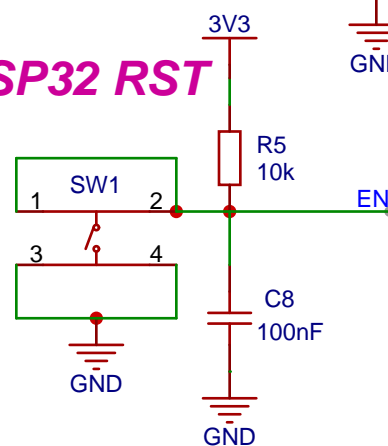
ESP32 MODULE



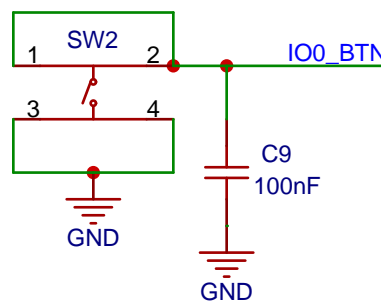
Grn Tx Ind




ESP32 RST

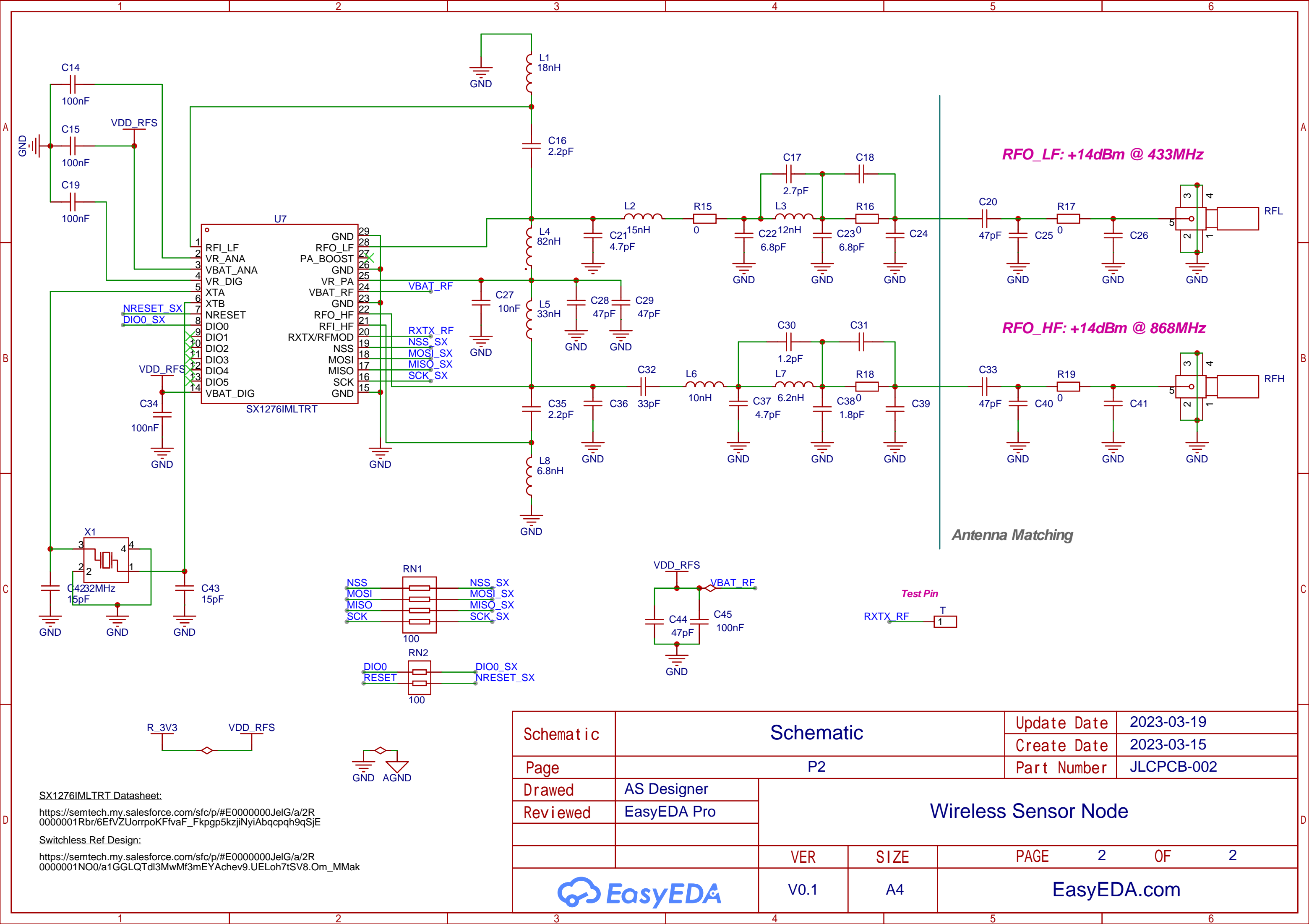


ESP32 Boot



Ref Design: https://dl.espressif.com/dl/schematics/esp32_devkitc_v4-sch.pdf
 User Guide: https://www.espressif.com/sites/default/files/documentation/esp32-wroom-32e_esp32-wroom-32ue_datasheet_en.pdf
 Datasheet: https://www.espressif.com/sites/default/files/documentation/esp32-wroom-32d_esp32-wroom-32u_datasheet_en.pdf

Schematic	Schematic			Update Date	2023-03-20	
				Create Date	2023-03-15	
Page	P1			Part Number	JLCPCB-002	
Drawed	AS Designer	Wireless Sensor Node				
Reviewed	EasyEDA Pro					
		VER	SIZE	PAGE	1	OF 2
		V0.1	A4	EasyEDA.com		




SX1276IMLRT Datasheet:

https://semtech.my.salesforce.com/sfc/p/#E0000000JelG/a/2R0000001Rbr/6EfVZUorrpoKFvaF_Fkpgp5kzjiNyiAbqcpqh9qSjE

Switchless Ref Design:

https://semtech.my.salesforce.com/sfc/p/#E0000000JelG/a/2R0000001NO0/a1GGLQTdl3MwMf3mEYAchev9.UELoh7tSV8.Om_MMak

Schematic	Schematic			Update Date	2023-03-19		
				Create Date	2023-03-15		
Page	P2			Part Number	JLCPCB-002		
Drawn	AS Designer	Wireless Sensor Node					
Reviewed	EasyEDA Pro						
		VER	SIZE	PAGE	2	OF	2
		V0.1	A4	EasyEDA.com			